

Hunter®

HC FLOW METER

 Hydrawise™ Ready

Quick Start Guide



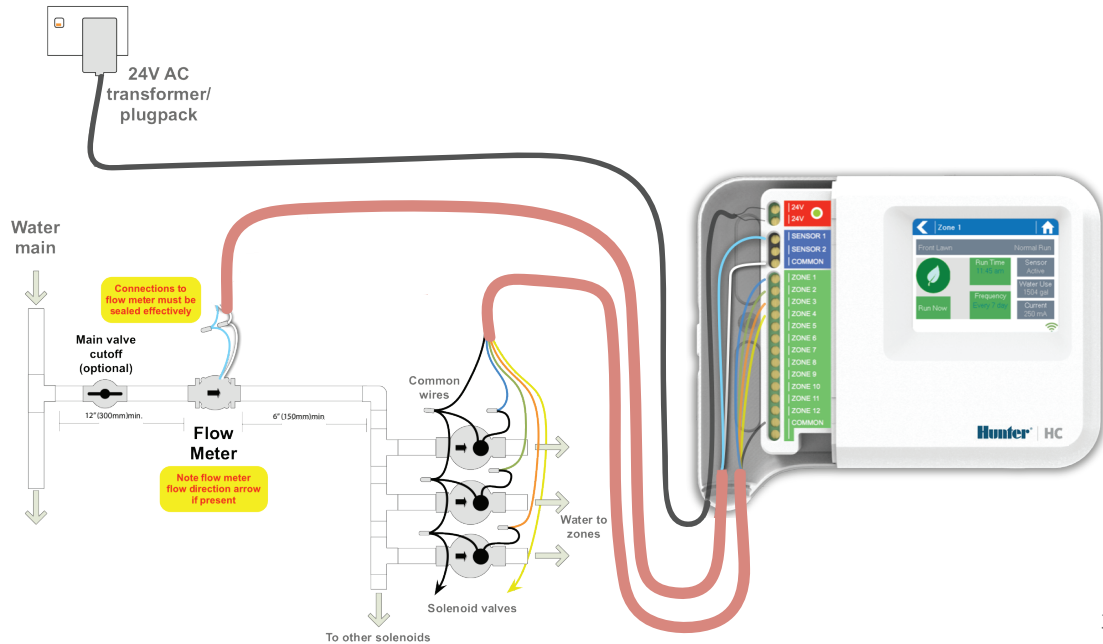
hunterindustries.com

TABLE OF CONTENTS

Contents	4
Planning	5
Installing	6
Configuration	7

HC SUPPORT

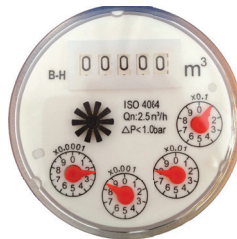
Thank you for purchasing the Hunter HC Flow Meter. In this Quick Start Guide you will learn how to install and configure the HC Flow Meter. For support for Hydrowise™ cloud software or help with your Hydrowise account, please visit hunter.direct/hchelp.



CONTENTS

The flow meter consists of 2 parts -

- 1. Flow Meter Body-** The flow meter body contains an analog dial for manual readings as follows. Your flow meter will have 3 wires protruding from the flow meter's body. The wires need to be connected to the Sensor inputs on the controller for remote measurement. In all models only 2 wires are used.
- 2. Adapter-** Each flow meter has an adapter to allow connection to your irrigation system.



Note: The flow meter will read in cubic meters (m³) on the dial, but will be converted to your local units gallons (gal) or litres (ltr) in the app/software.

Dial Marking	Measurement Unit
X0.001	1 Litre, 0.26 Gallons
X0.01	10 Litres, 2.6 Gallons
X0.1	100 Litres, 26 Gallons
m ³	Kilolitres, 260 Gallons

PLANNING

Planning is an important step in the successful installation of your Hunter flow meter and the reliable operation of your irrigation system.

- 1. Flow Meter Entry Location-** Flow meters are installed between the water supply and the master valve. To avoid false alerts, there should be no water taps or other uncontrolled water use on the downstream side of the flow meter. Where all the solenoids connected to the controller are not grouped together, it may be necessary to install more than one flow meter. Where the flow meter is installed, do not have 90 degree bends within approximately 12 inches (300mm) either side of flow meter.
- 2. Cable-** Two wire cable will be required. The gauge of flow meter cable will be determined by the total length of cable between the controller and the flow meter. For cable lengths of greater than 100' (30m) please use shielded cable.

Flow Meter Cable Length Chart

Wire Size		Max Length	
Gauge	mm ²	Feet	Meters
20	0.5	240	80
18	1.0	1000	300

INSTALLING

The following instructions assume you have already installed your Hydrawise controller.

1. Flow Meter Body

The flow meter has a marking on the body indicating direction of water flow.

Installation of the flow meter must be in the correct orientation with water flowing in the direction of the arrow on the flow meter body.

2. Connect Flow Meter Wire

Two wire cable will be required. The gauge of flow meter cable will be determined by the total length of cable between the controller and the flow meter. The general rule here is 0.5mm (24GA) wire is good for a run of up to 240 feet (80 metres). Connect the wires as follows to your Hydrawise controller.



Note: All wire connections should be done using waterproof connectors.

Wire Color	Sensor Terminal Block
White	Common
Blue	SEN1 or SEN2
Red	Not Used

CONFIGURATION

Configuration of your flow meter is completed using your Hydrowise account.

1. Log into your account

- 2. Create a Flow Sensor-** It is important that you select the correct flow meter when configuring this in the Hydrowise app. Choosing the wrong model may cause the Hydrowise controller to measure the wrong water flow.

Model	Description	Type of sensor setting for app/ software
HC-075-FLOW	Flow meter with 3/4" NPT thread	Flow meter with 3/4 inch connection
HC-100-FLOW	Flow meter with 1" NPT thread	Flow meter with 1 inch connection
HC-075-FLOW-B	Flow meter with 20mm BSP thread	Flow meter with 3/4 inch connection
HC-100-FLOW-B	Flow meter with 25mm BSP thread	Flow meter with 1 inch connection

- 3. Assign Zones to the Flow Sensor-** Refer to hunter.direct/hc/help for app/software setup.

TROUBLESHOOTING

Find more helpful information on your product? Find tips on installation, controller programming and more...



hunter.direct/hchelp

RESIDENTIAL & COMMERCIAL IRRIGATION | *Built on Innovation*[®]

Learn more. Visit hunterindustries.com

LIT-694-QS-FM US 10/16