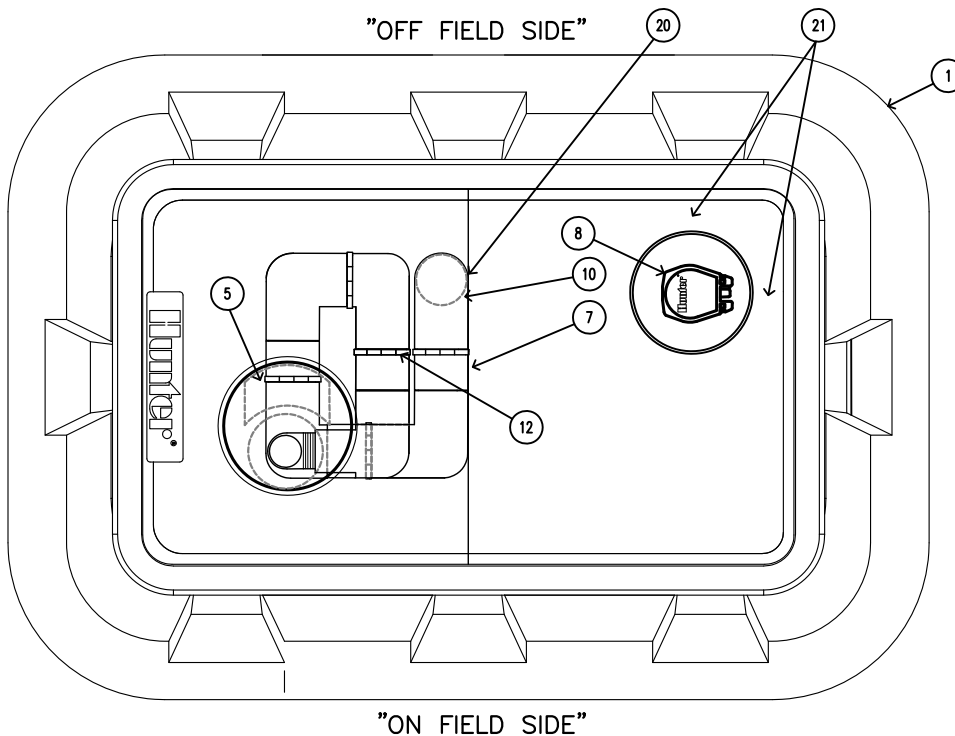


STK-1B

SYNTHETIC TURF BLOCK ROTOR & ENCLOSURE SYSTEM

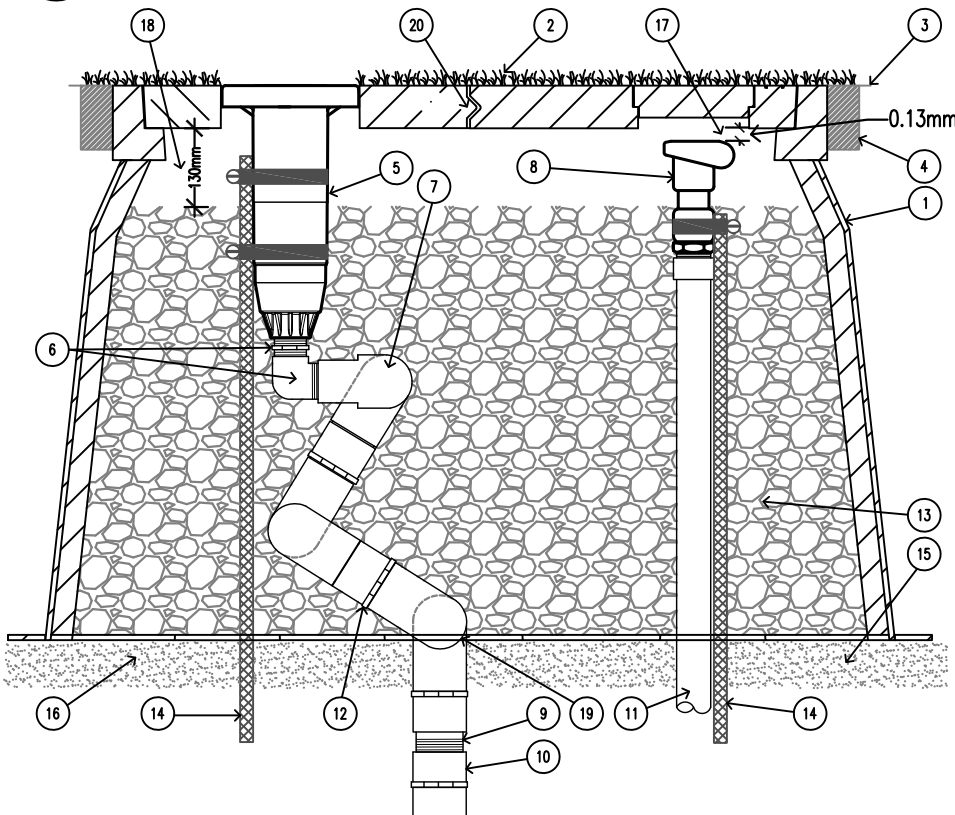


- 1 HUNTER ST173026B* COMPOSITE BOX & 2-PIECE POLYMER-CONCRETE LID ASSEMBLY WITH CAST-IN OPENING TO SUPPORT ROTOR LATERAL THRUST PLUS CAST IN OPENING WITH CIRCULAR COVER FOR QUICK COUPLER ACCESS
- 2 OPTIONAL - SYNTHETIC TURF OR RUNNING TRACK MATERIAL ATTACHED TO COVERS
- 3 FINISHED GRADE SET TO FIELD PERIMETER TACK/GLUE BOARD OR AS PER SPECIFICATION
- 4 50mm X 100mm TACK/GLUE BOARD AS PER SPECIFICATION ALL SIDES
- 5 HUNTER STG-900 WITH RUBBER COVER KIT 473900 INSTALLED
- 6 HUNTER 239800 & 239300 ROTOR ADAPTER FITTING WITH 3 ACME PIVOT POINTS
- 7 HUNTER ST2008VA PREFABRICATED 63mm SCH 80 PVC SWING JOINT WITH 6 ACME PIVOT POINTS TO PROVIDE MULTI-AXIS ARTICULATION AND ALIGNMENT OF ROTOR TO THE OPENING IN ENCLOSURE COVER
- 8 HUNTER HQ5RC-BSP QUICK COUPLING VALVE
- 9 HUNTER 241400 BSP INLET ADAPTER
- 10 LATERAL PIPING AND FITTINGS - 63mm MINIMUM AS PER SPECIFICATION FROM CONTROL VALVE THROUGH TO ST2008VA SWING JOINT

XX STK-1B TOP VIEW

SCALE: 1 : 8

Hunter IRRIGATION DETAIL



- 11 SCH 80 PVC RISER SUPPLY PIPING AND FITTINGS - 32mm MINIMUM
- 12 ACME THREADED PIVOTING POINTS (9 TOTAL)
- 13 20mm MINUS WASHED GRAVEL
- 14 16mm X 760mm REBAR STAKE AND STAINLESS STEEL STRAPPING
- 15 COMPACTED FIELD BASE MATERIAL AS PER SPECIFICATION
- 16 PROVIDE DRAINAGE VIA ACCESS TO FIELD DRAINAGE SYSTEM
- 17 TOP OF QUICK COUPLER SET 13mm BELOW UNDERSIDE OF ENCLOSURE COVER
- 18 GRAVEL LEVEL 130mm BELOW UNDERSIDE OF ENCLOSURE COVER (TO BOTTOM OF ROTOR'S COMPARTMENT)
- 19 ELEVATION OF SWING JOINT'S INLET - SET SECOND PIVOT POINT ON SWING JOINT WITH BOTTOM OF ENCLOSURE PER SIDE VIEW DETAIL DRAWING (660mm BELOW ENCLOSURE TOP)
- 20 LOCATION OF SWING JOINT'S INLET - SET INLET AT EDGE BETWEEN ENCLOSURE COVERS & LOCATE 130mm FROM THE TOP OF COVER PER TOP VIEW DETAIL DRAWING. INLET MUST NOT BE SET CLOSER TO ROTOR THAN SHOWN.
- 21 LOCATION OF QUICK COUPLER INLET PIPING - MEASURE INLET PIPING LOCATION AT TOP RIGHT HAND CORNER OF ENCLOSURE - 130mm FROM TOP EDGE AND 130mm FROM SIDE EDGE.

*ENCLOSURE DIMENSIONS

- 2 - PIECE COVER - 432mm X 762mm
- EXPOSED RIM - 508mm X 838mm
- OVERALL HEIGHT - 660mm
- BASE PAD - 686mm X 1041mm

XX STK-1B SIDE VIEW

SCALE: 1 : 8

Hunter IRRIGATION DETAIL